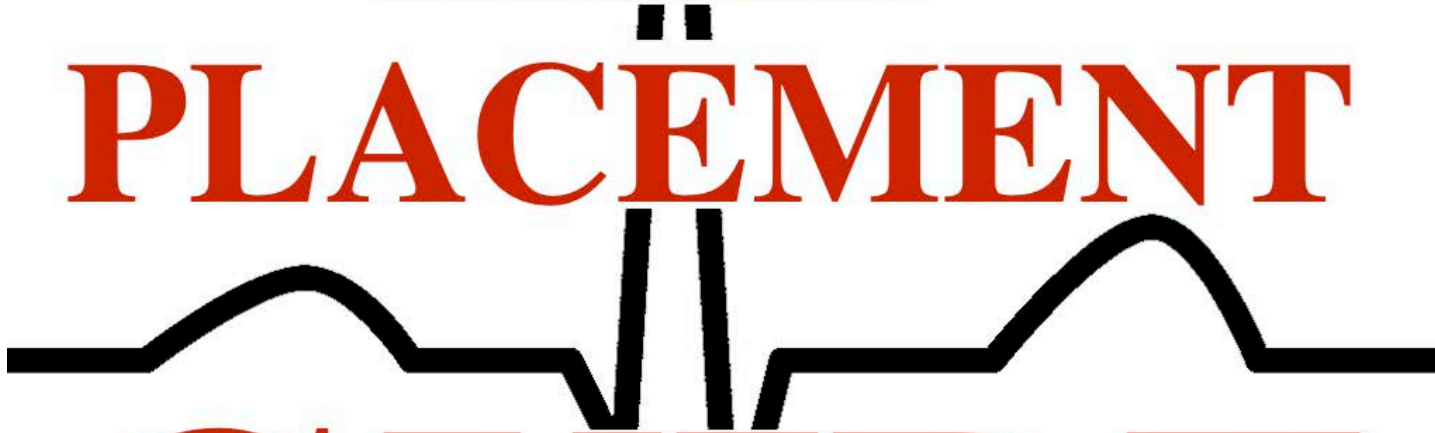
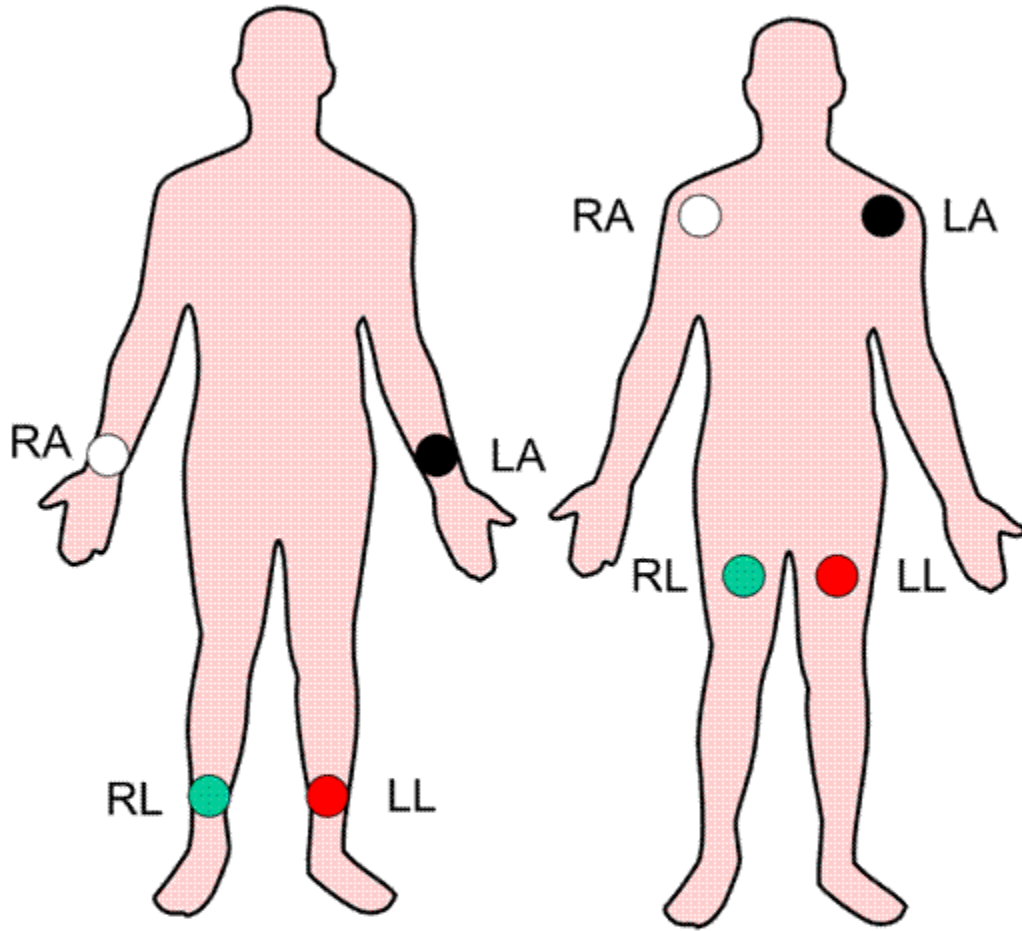


**ECCG**  
**LEAD**  
**PLACEMENT**  
  
**GUIDE**

# Limb Lead Placement



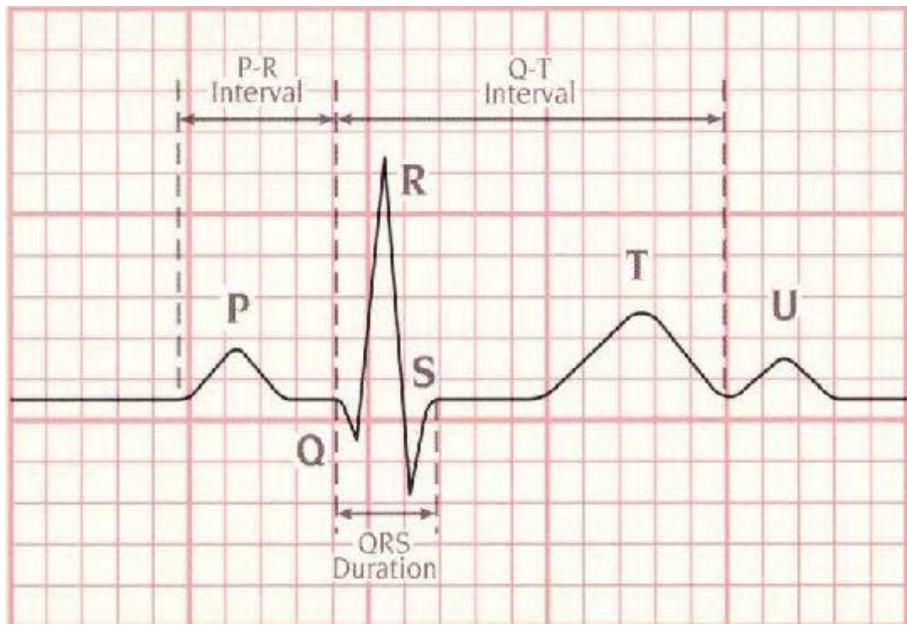
RA = Right Arm  
LA = Left Arm  
RL = Right Leg  
LL = Left Leg

RA White (Clouds)  
is Right

LA Smoke  
over

LL Fire

RL Grass is always  
Green

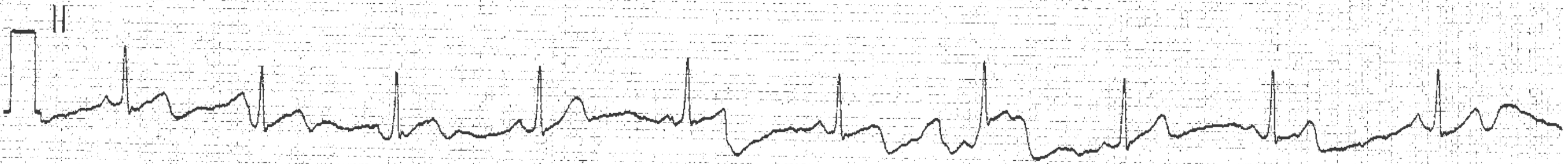


You should see clean lines that may or may not be uniform throughout the strip.

There are many different rhythms and not all look the same.

This is a good strip from an actual person.

ID#: 042216111449 22Apr16 11:18:40 HR:62



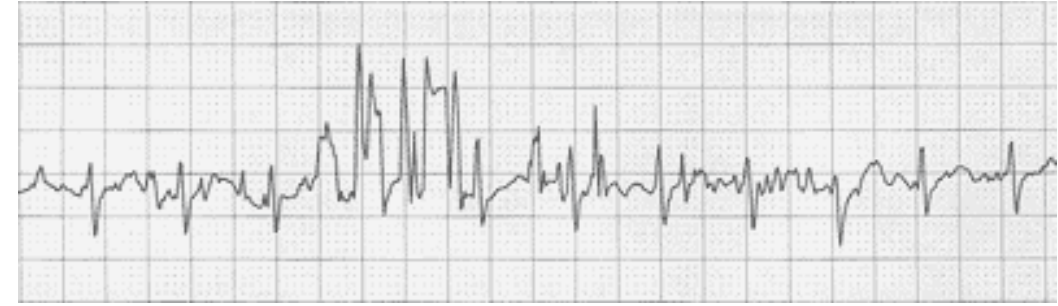
x1.0 .5-40Hz 25mm/sec

000 000 3011371-022 2004KR0KG3G07R LP1211556374

If you have what looks like a line from a seismograph then you most likely have artifact.

Artifact can be caused by several things.

- 1 Poor connection to electrode.
- 2 Pt may have too much hair for electrode to get a good reading
- 3 Pt maybe sweaty and electrode wont stay on.
- 4 Interference from electronics.



Try fixing one of the above problems and see if legibly of strip increases.

Too much artifact and The ALS member may not be able to read strip accurately.

